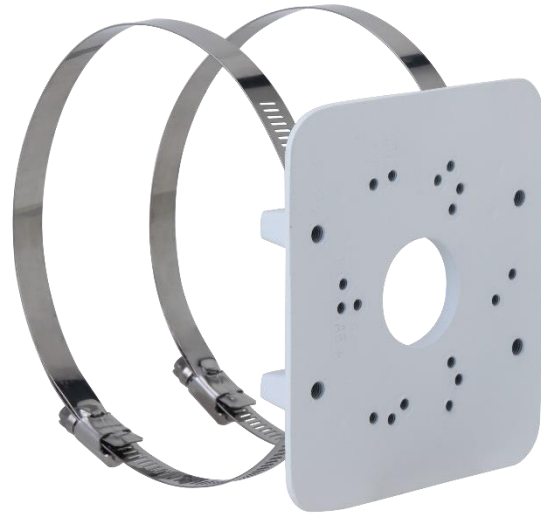


## *Pole Mount Bracket*

# LXPM01



### Key Features

- Aluminum & SUS304 pole mount bracket
- White color
- Sustains a maximum load capacity of 6.61lb
- Easy installation

# Specification

Accessory	
Weight	0.27kg(0.6lb)
Load Bearing	3.0kg(6.61lb)
Material	Aluminum & SUS304
Appearance	White
Dimension(WxHxD)	125.6mm x 114mm x 20mm (4.94" x 4.49" x 0.79")
Mast Diameter	Φ 80 ~ 150m (Φ 3.15" ~ 5.91")
Pipe Thread	N/A

## Dimensions (mm[inch])

